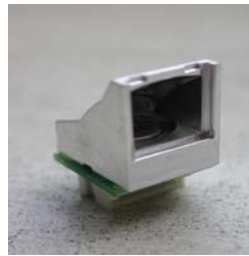


Thermopile Modules

- MEMS - CMOS compatible sensor chips
- integrated signal conditioning (ASIC)
- integrated temperature reference
- 5 V supply voltage, output range 0.3...4.7 V
- miniature pcb and optics dimensions
- precalibrated
- high reproducibility / easy replacement
- high reliability.



Available Versions:

- Board sizes 11x11 mm² or 11x20 mm²
- Different connector types and mounting
- Calibrated for desired object temperature range
- Ambient temperature range -20°C to 120°C
- Different optics types and facing directions
- With or without compensation

